

PROCAT

DISTRIBUTION TECHNOLOGIES

MODULAR SOFTWARE SOLUTIONS FOR WAREHOUSES



HANDS-FREE BARCODE SCANNING

WWW.PROCATDT.COM

866-776-2285

PROCAT

DISTRIBUTION TECHNOLOGIES

Modular Warehouse Solutions



CORE MODULES

PickRight.....	4
ReceiveRight.....	8
CountRight.....	8
StockRight	9
LoadRight.....	10
ShipRight.....	10

SPECIALIZED MODULES

IncentRight.....	12
TrackRight.....	12
PalletRight.....	13
StageRight	13
ReturnRight.....	14
WeighRight.....	14
TaxRight.....	15
TaxRight Stamp Management.....	15

For nearly two decades, ProCat Distribution Technologies has been helping hundreds of small to mid-sized warehouses across the United States with hands-free barcode scanning software solutions.

With a management team that has a combined 150 years of hands-on experience in distribution and logistics, ProCat understands the need for versatility. That is why ProCat's software solutions are designed using a flexible, modular architecture that can grow as your business grows. PickRight, a barcode scanning platform, is usually the first to be installed, addressing the critical order picking function in the warehouse.



The ProCat Difference

✓ Hands-Free Scanning Solutions

- Wrist worn devices allow employees to work efficiently

✓ Interfaces with Your Current ERP

- Allows for quick one-week installation

✓ Enhances Existing WMS

- Works with your current warehouse systems

✓ Real-Time Reporting

- Over 70 management reports and analytics

"Since installing PickRight over 10 years ago, we never once questioned that decision. Our pick rates drastically improved and our accuracy has never been better. ProCat continues to enhance their software to meet changing needs and is a great partner in my business."

Hugh Raetzsch, President and CEO, Lyons Specialty Company, Port Allen, LA

The PickRight solution works in conjunction with the other ProCat modules to provide comprehensive, end-to-end warehouse management. Implementing PickRight is fast and easy because it works with all ERP systems and does not require a WMS. To expand technology to other parts of the warehouse, companies can choose which ProCat solution to implement next, based on their timeline and business needs.

ProCat solutions are used across the country in the beverage, convenience, foodservice, spirits, electrical, and hardware industries. ProCat is committed to delivering high-quality, high-performing solutions that provide excellent results for their customers.





Pick Perfect Orders

"The impact on the company has been wonderful. It is by far the best investment we have made in my forty years of business."

George Nasif, Jr, President
Vicksburg Specialty Company
Vicksburg, MS



PickRight is hands-free barcode scanning software for distribution centers. Companies nationwide are benefitting from the immediacy and accuracy of PickRight. The easy to use and easy to learn solution with a wrist worn display and ring scanner has proven to achieve 99.9% order accuracy and a 90% reduction in customer claims. PickRight reduces labor costs, while picker productivity increases between 20-40%. Customers report achieving 100% ROI in less than one year.

PickRight does not require a WMS and is usually installed 8 weeks from time of commitment. The fast and easy installation only takes 1 week. Deployment occurs one pick area at a time for minimal disruption to on-going operations. Pickers are fully trained in less than one shift. Recruiting new staff is easier with PickRight because companies can hire less experienced workers. PickRight features easy to use picker prompts and supports numerous picking methods, including team picking and batch picking.

PickRight can accommodate 4 to 100 order pickers – so operations can easily scale up as a company grows. PickRight seamlessly integrates with all ERP systems and allows for real-time label printing. There are no additional charges for software updates or for support from our U.S. based help desk.

Simply the Best Order Picking Solution for Small to Mid-Size Distribution Centers

- ✓ **No WMS Required**
- ✓ **100% ROI in Less Than 12 Months**
- ✓ **Implement in Only 8 Weeks**

After customers implement PickRight, they typically select from one of two paths when adding additional modules from the ProCat suite of solutions.

Support inbound logistics by adding:



Support outbound logistics by adding:





Features & Options



Application Options and Features

- Correct Pick – Chime
- Mispick – Buzzer
- Reverse Pick Sequence Feature
- Multiple Pickers on One Unit of Work at the Same Time
- Not Picked Reason Codes
- Manual Pick Feature with Reason Codes
- Partial Pick Feature
- Automatic Upgrade Deployment
- Data Export Feature
 - Order Correction Data
 - Bundle Counts
 - Tote Counts
 - Detailed Pick Data
 - Time of Each Pick
 - Picker Data
 - Catch Weight Data
 - Lot Control Data
- Barcode Utilities
- Audit Function
- Restocking Function

User Options and Features

- Logon by Password
- Logon by Badge Scan
- Multi-lingual Display
- Text to Speech Language
 - English / Spanish

Pick Area Options and Features

- Pick Area Screen Formats
- Tote / Container Defaults
- Allow Shelf Tag Scanning
- Next Unit of Work Prompting
- Complete Pick
- Target Pick Rate
- Downtime Settings
- Package Label Printing
- Pallet Label Printing
- Packing List Printing
- Retail Price Tag Printing

Customer Options and Features

- Customer Based Shipping Label Options
- Customer Message Display Capabilities

Item Options and Features

- Full Case Designation
- Quantity on Hand Data Display
- Expiration Date Testing
- Catch Weight Item Flag
- Catch Weight Minimum and Maximum
- Lot Control Capture
- Hazmat Label Printing
- User Data Pass Through Fields
- Substitute Item Capabilities

Supported Picking Methods

Picking Method	Description
Basic Picking	Picking one unit of work at a time. Picker walks a pick path and puts items into containers for a single store.
Batch Picking	Picking multiple orders simultaneously. A group of work assignments get picked concurrently by one picker.
Zone Picking (Pick & Pass)	Primarily for repack operations. Pickers are assigned to a range of pick locations. Ranges can be fixed or floating.
Wave Picking	Sequencing of work assignments (may be multiple orders) based on criteria other than a single truck route.
Team Picking	Multiple pickers picking one unit of work.



Real-Time Management Reporting

PickRight Reporting Tools and Dashboards

The PickRight real-time reporting suite consists of over 70 reports that provide insights and visibility into operations and helps enhance management capabilities. Reports can be accessed from any computer on the company's network. Reports can be run for a single date or a date range and are included as part of the standard PickRight application.

PickRight dashboards allow managers to monitor their shift progress with real-time information. They can visualize the remaining man hours by pick area and a shift completion time based on historic pick rates.



PickRight Report Examples

Report Category	Report Name	Report Description
LoadRight Reports	LoadRight Packages Loaded	Shows number of packages loaded by load area and stop, for selected route.
PickRight Analytics	Route and Pick Area Statistics	Amount of time it took to pick each area. Units of Work, Lines, and Picks.
Shift Management	Pick Status by Route	By Route, each pick area's completed picks, open picks, and total picks.
Shift Management	Picker Allocation by Pick Area	Pick rates over 2-3 weeks to calculate ideal number of pickers per area.
Productivity Reports	Pick Area Summary by Picker	Productivity information by date, pick area, and picker. Includes picks per hour, number of lines, down time, work time, and percent compared to average.
Productivity Reports	Picker Audit	Displays intervals in which a picker was not scanning during a shift.
Productivity Reports	Picker Summary	Cumulative productivity data combined for all included dates. Drill down from picker, to area, to shift.
Research Reports	Customer Inquiry	Listing of what was ordered and shipped to all customers. Research customer claims for missing or wrong product.
Research Reports	Item History by Route	All routes and stops and customer information that a particular item was picked by date.
Utilities	Find Package Based on Items	Identify a package with no attached label.
Utilities	Message Listing	Supervisors can send messages to individual or all wearable users in real-time. Report lists all messages sent and receipt status for a given date range.



Label Printing

- ✓ Real-Time Label Printing
- ✓ Customized Formats by Pick Area
- ✓ Pallet, Full Case and Repack Labels
- ✓ Mobile Printers Improve Efficiency

PickRight can print a wide variety of labels. Label formats can be easily modified to meet customer needs.

PickRight package labels are printed real-time as products are being picked. Labels can be printed for packages, packing lists, pallets, and more.

- Case Labels
- Repack Container Labels
- Price Tag Labels
- Item Tag Labels
- Packing Lists
- Pallet Labels

Repack
Container
Label

ROUTE: 403 **STOP: 10**

5 00002060

Pick Area:
Cooler

Johnson's Family Restaurant
22601 HWY 190
Baton Rouge, LA 70803
985-767-8500

Cust # 900738
Invoice # 18602
Delivery Date: 10/02/2020

Number of Items in Container - 14

Full Case Label

ROUTE: 287 **STOP: 15**

0500002377

Pick Area: Dairy
MH
10/12/20

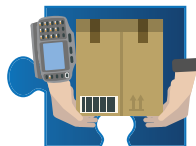
GHEZZIS MARKET Inv #: 1701282
CD Vanilla Gpa HGL Item #: 1214
PK:4 SZ:HGL UOM:CA

Packing
List

G600005057		6/01/2022	
Customer: CITY MART		Customer#: 52159	
	QTY: 12		
Item	Description	QTY	Retail
39942	REESE'S STICKS KING SIZE	1	1.79
14489	BUTTERFINGER DARK SHARE SIZE	1	1.79
14204	TWIX COOKIE BAR, WHITE	1	1.19
13794	TUBE NUT HNY RST 1.75Z 2/1.09	1	0.55
82716	ICE BREAKER MINT DUO STRAWBRY	1	2.59
30139	ALMOND JOY	1	1.19
11213	PILLSBURY COOKIE CHOC CHIP 3Z	1	1.49
38407	HEATH KING SIZE	1	1.79
39608	HERSHEY ALMOND KING SIZE	1	1.79
35394	REESE'S PEANUT BUTTER CUP KS	1	1.79
49018	SKITTLES ORIGINAL FRUIT	1	1.19
10379	WELCHS 5Z STRAW. FRUIT SNACKS	1	1.69

"We love the PickRight package label printing features. Our pickers love not having to hand write customer information on the boxes, and the drivers can easily see where to deliver the packages. PickRight has been great!"

Mike Cavaliero, Warehouse Manager, L.J. Zucca, Inc., Vineland, NJ



ReceiveRight is ProCat's software application that allows vendor purchase orders to be confirmed on the receiving dock. The receiver wears the same device that is used in PickRight and either scans a barcode on the purchase order, or selects the purchase order from a list box on the wearable. Cases are then scanned as they are checked in. ReceiveRight alerts the receiver of any wrong cases. If a product has an overage, the receiver can either accept the overage or reject it. Products that do not have barcodes are handled by the application. ReceiveRight sends a file back to the host identifying items that were not received. Label printing is available as part of ReceiveRight.

Features and Options:

- ✓ **Confirm Accuracy of In-Bound Freight**
- ✓ **Label Printing for Put Away**
- ✓ **Uses PickRight Hardware**
- ✓ **Purchase Order Summary Printing**



"ReceiveRight has brought the same level of accuracy to our inbound freight that PickRight brought to our order picking. Our inventory is more accurate and our customer fill rates are increasing because of ReceiveRight. ReceiveRight is a huge improvement in the way we receive our freight."

Frank D'Amico III, President, BTC Wholesale Distributors, Birmingham, AL

INVENTORY & CYCLE COUNTING



CountRight is an application that makes both item cycle counting and full inventory counting more accurate. A wrist worn touchscreen computer directs employees to item locations and prompts them to count products. CountRight uses the same hardware that PickRight uses. CountRight helps to resolve unit of measure challenges by scanning product barcodes and allowing for easy transitioning between item levels during the counting process.

Extensive Reporting Package Includes Detailed Inventory Counts By:

- ✓ **Pick or Slot Location**
- ✓ **Vendor**
- ✓ **Buyer**
- ✓ **Manufacturer**

CountRight can also produce variance reports, create recount assignments based on variance thresholds and create an export file back to the host ERP. CountRight's integrated scanning technology makes inventory counting fast, efficient, and accurate!



Ensure Proper Inventory Rotation

RECEIVING

- Confirm accuracy of in-bound freight
- Notice to put away team

PUT AWAY

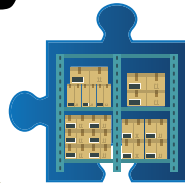
- Finds backstock locations
- Scans product and location to capture where products are stored
- Prints barcoded GID labels for easy ID and future movement

LET DOWN

- Background jobs create intelligent replenishment
- Creates let down assignments for staff

REPLENISH PICK LOCATIONS

- Staff takes let downs and replenishes pick locations



StockRight provides a simple method for restockers to find back-stock inventory and replenish picking bins. Both planned restocking and pick shift (immediate) restocking are supported providing first-in, first-out replenishment so products are properly rotated. StockRight uses data from ReceiveRight to know what products are being received and captures the put away locations. ReceiveRight creates item records when each item is received and prints barcoded product labels. StockRight scans the product labels and provides a display screen that instructs the restocker to capture the required information. The StockRight, ReceiveRight, and PickRight applications use the same equipment. StockRight greatly simplifies the restocking process and eliminates the need for a full warehouse management system for small to mid-size distributors.

StockRight provides tracking of the received date, expiration date, lot number, and serial number to support compliance of the Food Safety Modernization Act (FSMA) regulations.



StockRight Components:

- ✓ **Put Away Function**
 - Driven by Receiving
 - LPN Printing
- ✓ **Replenishment Methods**
 - Manual
 - Min-Max
 - Sales History
 - Orders Compare
- ✓ **Let Down Function**
- ✓ **Bin Restock Scanning**



Scan Packages at Loading

LoadRight takes package information from PickRight and creates truck loading files. As employees are loading packages onto the truck, they scan the PickRight package label barcode.

This will confirm that all the packages being loaded are correct and alert the operator to any missing packages. The loading can be confirmed by stop, by pick ticket, or by stop and area. The loader wears the same device that is used for PickRight. There is no outside programming required for this application. The PickRight application creates the loading files that are needed for LoadRight to work.

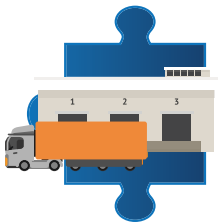
Features and Options:

- ✓ Load the Right Packages on the Right Trucks
- ✓ Organize Orders by Route and Stop
- ✓ Prevent Incomplete Orders from Leaving

PACKAGE DELIVERY VERIFICATION



Scan Packages at Delivery



ShipRight, ProCat's solutions for delivery drivers, replaces the driver's paper manifest with a hand held computer. It gives the driver a route list of the customers they will be delivering to that day. At each stop, the application and device will allow the driver to scan the PickRight package label barcode to confirm

delivery. The software also provides the driver with receivables instructions, tote collection information, and electronic signature capture functionality. There is an easy signature storage and retrieval program for confirming customer inquiries.

- ✓ Replaces Driver's Paperwork
- ✓ Displays Route & Customers
- ✓ Confirms Packages for Each Delivery
- ✓ Provides A/R and Tote Collection Instructions
- ✓ Includes Electronic Signature Capture

"ShipRight has been a game changer for our company. ShipRight standardized the way our drivers do their jobs. We love the electronic signature capture."

Sherwin Herring, President
Southco Distributing Company, Goldsboro, NC





Features, Receipts, and Reports

ShipRight Features

- ✓ Simple Route List Display
- ✓ Bundles by Pick Area Display
- ✓ Totes Recovery Screen
- ✓ Receivables Instructions Screen
- ✓ Electronic Signature Capture Screen
- ✓ Easy Signature Look-up Program
- ✓ Driver Check-in Program
- ✓ Temperature Recording

Real-Time Delivery Receipts

- ✓ Invoices Delivered
- ✓ Proof of Delivery Signature
- ✓ Number of Totes and Bundles
- ✓ Temperature Control Items
- ✓ Confirm High-Value Products

Sample Reports

Proof of Delivery by Route

Report shows route and date in the header. Details for each stop are provided (stop number, customer ID, customer name, signature image file, first name, and last name). Select the signature image and a new window will show customer info, amount, invoice number, number of totes/ bundles/ packages, date/ time stamp of signature and the image of the signature.

Proof of Delivery by Route

Route: 370 6/1/2022

Stop	Customer	Name	Filename	First Name	Last Name
99	522948	BERLIN QUIR STOP	959405_20141015062529.ATM	A	Patery
126	632443	BASS RIVER TRADING CO	937250_20141015060126.ATM	Mike	Carr
142	646382	STOP N GO #11	993311_20141015063404.ATM	Sub	T
267	591414	GOLDEN MARKET	944785_20141015072236.ATM	Lynn	Spill
252	596882	STOP N GO #26	910828_20141015075647.ATM	Jam	Hedroli
261	932154	PETER'S GROCERY	959254_20141015062652.ATM	John	Jones

Proof of delivery summary sheet. The Filename is a link to the actual Proof of Delivery Document.

Delivery Summary

Report shows time stamp for beginning and end of the complete route and start/stop for individual stops. The report also shows how many bundles and totes were delivered at each stop.

Delivery Summary

6/1/2022

Route Start: 6/1/2022 1:08:45 AM Route End: 6/1/2022 2:23:01 PM Total Route Time: 1:14:16

Stop	Customer	Name	Start Time	End Time	A/N Start	A/N End	Package Start	Package End	Verify Start	Verify End	Qty	Qty2
99	522948	BERLIN QUIR STOP	6/1/2022 1:08:45 AM	6/1/2022 1:10:00 AM							0	0
126	632443	BASS RIVER TRADING CO	6/1/2022 1:10:00 AM	6/1/2022 1:11:00 AM							0	0
142	646382	STOP N GO #11	6/1/2022 1:11:00 AM	6/1/2022 1:12:00 AM							0	0
267	591414	GOLDEN MARKET	6/1/2022 1:12:00 AM	6/1/2022 1:13:00 AM							0	0
252	596882	STOP N GO #26	6/1/2022 1:13:00 AM	6/1/2022 1:14:00 AM							0	0
261	932154	PETER'S GROCERY	6/1/2022 1:14:00 AM	6/1/2022 1:15:00 AM							0	0

SHIPRIGHT PROCAT

Mark Hoffman Delivery Summary 11/4/15 2:49:15 PM

Invoice #: 3325112 Invoice Amt: \$1,200.00

TOTES	2
BUNDLES	3
CIGS	30
TOBACCO	6

Invoice #: 3325113 Invoice Amt: \$1,792.31

TOTES	2
BUNDLES	3
CAMEL SNUS	6
PERISH	10

Temperature Control Items:

Invoice: 3325112 538421 DELI EXP MUFFIN SAU EGG & CH (EA) 33 Degrees

Invoice: 3325112 582882 LB TWIN SAUSAGE BISCUIT (EA) 33 Degrees

Returned Totes: 0123456 000001

Delivered Totes: 004947 004948 221458

Returned Items: Invoice: 3325112 131821 KOOL BOX KS FOC 1

Mike Romer

MIKE ROMER Date/Time 11/4/15 2:49:21 PM

MERCHANDISE RECEIVED EXCEPT AS NOTED. ACCOUNT AGREES TO PAY ALL COSTS OF COLLECTING ANY BALANCE PAST DUE ON THIS INVOICE, INCLUDING ALL REASONABLE ATTORNEY FEES. A FINANCE CHARGE OF 1 1/2% PER MONTH WILL BE CHARGED ON ALL PAST DUE INVOICES. CUSTOMER HAS 24 HOURS TO CALL IN ANY DISCREPANCIES TO PITCO FOODS.



Pay Employees for Productivity

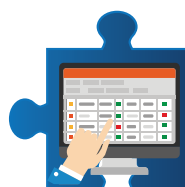
IncentRight is a simple and straightforward solution to reward workers for achieving productivity targets. With IncentRight, management can expect a potential 10-20% increase in productivity. The IncentRight modeling tool is designed to allow management to set different incentive pay amounts by pick area. With IncentRight, the order picker can be measured on either picks or order lines. Two key management judgements are needed for the IncentRight calculations: (1) the targeted pick rate and (2) the incentive amount for achieving a targeted pick rate.

IncentRight is an extension of ProCat's PickRight solution, so companies must have PickRight before they can take advantage of IncentRight. PickRight results in order picking accuracy rates of 99.9%. Since IncentRight uses the PickRight platform, achieving high accuracy is already addressed as part of the pay-for-performance solution. As a result, the IncentRight system was designed to drive increases in through-put or productivity.

IncentRight is very easy for employees to understand. As they are working, employees are able to see on their wrist worn display, how they are tracking versus their targeted goals. Also, employees very clearly know incentive amounts they have earned during that pay period and reports are provided to include with paychecks. A second report is available to show management the incentives that everyone has earned.

- ✓ Up to 20% Productivity Increase
- ✓ Incent Pickers by Picks or Lines
- ✓ Modeling Tools
- ✓ Real-time Tracking for Pickers
- ✓ Pay Reporting for Pickers
- ✓ Management Reports

LONG TERM DATA STORAGE

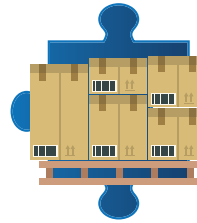


Traceability, Reporting & Recalls

TrackRight is a data mart that holds aggregated data from ReceiveRight, PickRight, and ShipRight for 2 years.

TrackRight reporting can be used to help satisfy regulatory requirements such as those imposed by FSMA (The Food Safety Modernization Act). TrackRight reports can be used to show receiving, picking, and delivery information, including any temperatures recorded. Lot information is also stored to support recall efforts.





Batch Orders for Picking

PalletRight is a solution for building logical pallets. PalletRight allows a user to choose a delivery date and pick area to be processed. The solution will create logical pallets for the selected route and area based on pre-determined parameters such as maximum stops and cube per pallet.

PalletRight shows a preview of the pallets that have been created and allows the user to either accept or reject the pallet formation. If rejected, parameters can be modified and the solution can create new logical pallets based on the modified parameters. PalletRight has the ability to create pallet pairs that can be picked simultaneously with a double pallet jack.

"PalletRight has had a dramatic impact on our full case picking operation by allowing us to efficiently pre-cube our pallets in real-time."

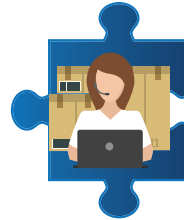
Steve Douglas, President, Douglas Companies, Conway, AR

STAGE CUSTOMER ORDERS



Merge Pick Areas at Loading

StageRight is a solution for logically staging packages on the loading dock. It utilizes bays of flow rack to allow packages for customer orders to be accumulated. As orders are completed from the various pick areas, the packages are transported to the loading dock and scanned by StageRight. The StageRight software tells the operator where to place each package in the flowrack. As customer orders are completed and all the packages for an order have been scanned by StageRight, the software alerts the truck loader that the stop is ready to be loaded onto the truck. StageRight is appropriate for companies with multiple repack areas and limited dock space.



Quickly Process Product Returns

ReturnRight is a complete returns work station that enables wholesalers to quickly and efficiently process all types of product returns.



ReturnRight combines a networked touchscreen PC with a hand scanner and printer for vendor box labels. Daily data files are sent to ReturnRight providing current information on the products and vendors. Returns are taken to the ReturnRight station to be processed.

- ✓ Scan Returns for Quick Identification
- ✓ Process All Return Sources
- ✓ Determine Disposition
- ✓ Process Driver Returns
- ✓ Perpetual Returns Inventory by Vendor

"ReturnRight has allowed us to solve our returns room nightmare. We now know exactly what we are owed from each vendor."

Joe Noorda, Executive Vice President, Gem State Distributing, Pocatello, ID

GS1 BARCODE LABEL PRINTING



Enhance Product Labeling

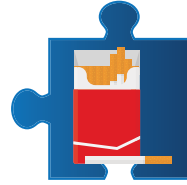
WeighRight is a simple to use scale system that produces GS1 barcode labels for products.

The easy-to-use system integrates a scale with a table-top touchscreen computer, label printer, and hand scanner.

The operator places the item to be labeled on the scale, which displays the weight on the computer screen. With a simple press of a button, a GS1 label prints for the item. In addition to weight, WeighRight can capture lot number, customer number, country of origin labeling (COOL) code, or expiration date and embed this information in the printed item barcode label.

WeighRight can be used as part of the receiving process, picking process, or as a stand-alone operation. A truck route can be processed by WeighRight and all catch weight items on the route can be identified, pre-picked and labeled, eliminating the need for special handling of catch weight items during the pick shift. The PickRight picker scans the GS1 label affixed to the item, and all the information from the label, including the item weight, is automatically extracted and sent back to the host for processing.





Identify Picking Errors & Validate Tax Stamps

TaxRight establishes a connection between the customer's cigarette orders and the company's stamping equipment. This connection allows stamping machine operators to catch cigarette picking errors and ensures that the correct tax stamps are being used for every customer's order. The result is amazingly accurate cigarette orders with no checking labor. TaxRight's patented process is successfully being used by over 150 cigarette stamping operators nationwide.

As cartons flow into the stamping machine, the TaxRight scanner reads the barcode on the bottom of each cigarette carton to be stamped. The cartons are verified and displayed on the touchscreen as they are counted down. If a mis-pick or overage occurs, TaxRight stops the stamping machine before the stamp is applied. Upon completion of the order, the operator begins the next order with a simple touch of the screen.

"After we installed TaxRight, customer cigarette claims became a very rare occurrence in our company. TaxRight is an excellent product that I highly recommend."

Pat Carrico, Chief Executive Officer
Richmond Master Distributors, South Bend, IN

Accurate Orders Every Time

- ✓ **Validate Every Carton Before Stamping**
- ✓ **Confirm Tax Jurisdictions**
- ✓ **Pre-Stamp and Post-Stamp Operations**
- ✓ **Easy Touchscreen Controls**

TAX STAMP MANAGEMENT SYSTEM



Stamp Management System

TaxRight has developed a tax stamp management system that manages the wholesaler's tax stamp inventory from time of receipt to time of application.

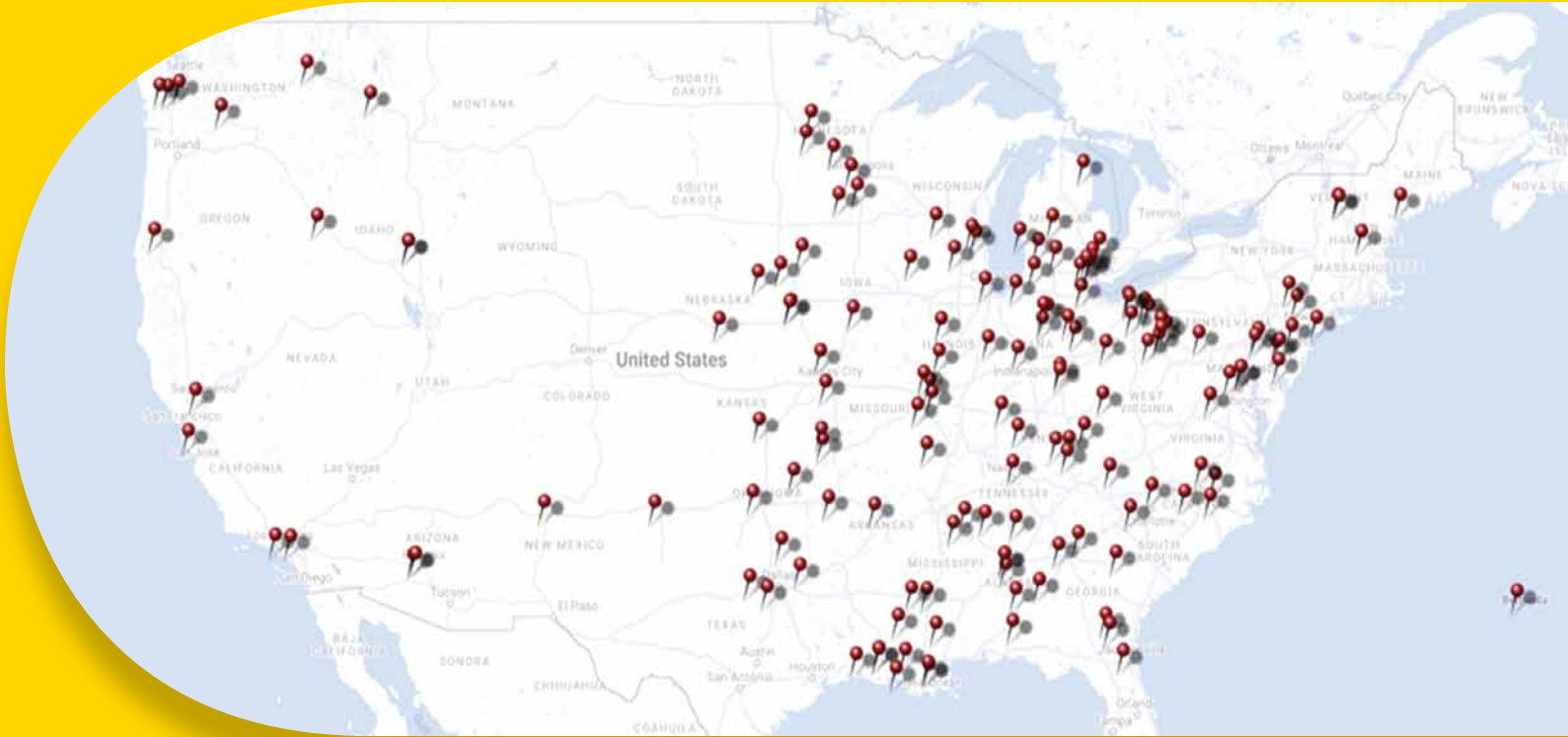
- Uniquely identifies each roll of stamps at time of receipt
- Maintains a perpetual inventory on all stamp rolls in the warehouse
- Extensive Reporting Suite

The TaxRight Stamp Management System is the solution to controlling millions of dollars of tax stamp inventory!

PROCAT

DISTRIBUTION TECHNOLOGIES

TECHNOLOGY FOR THE DISTRIBUTION INDUSTRY



SERVING OVER 200 WAREHOUSES IN 40+ STATES

WWW.PROCATDT.COM

866-776-2285